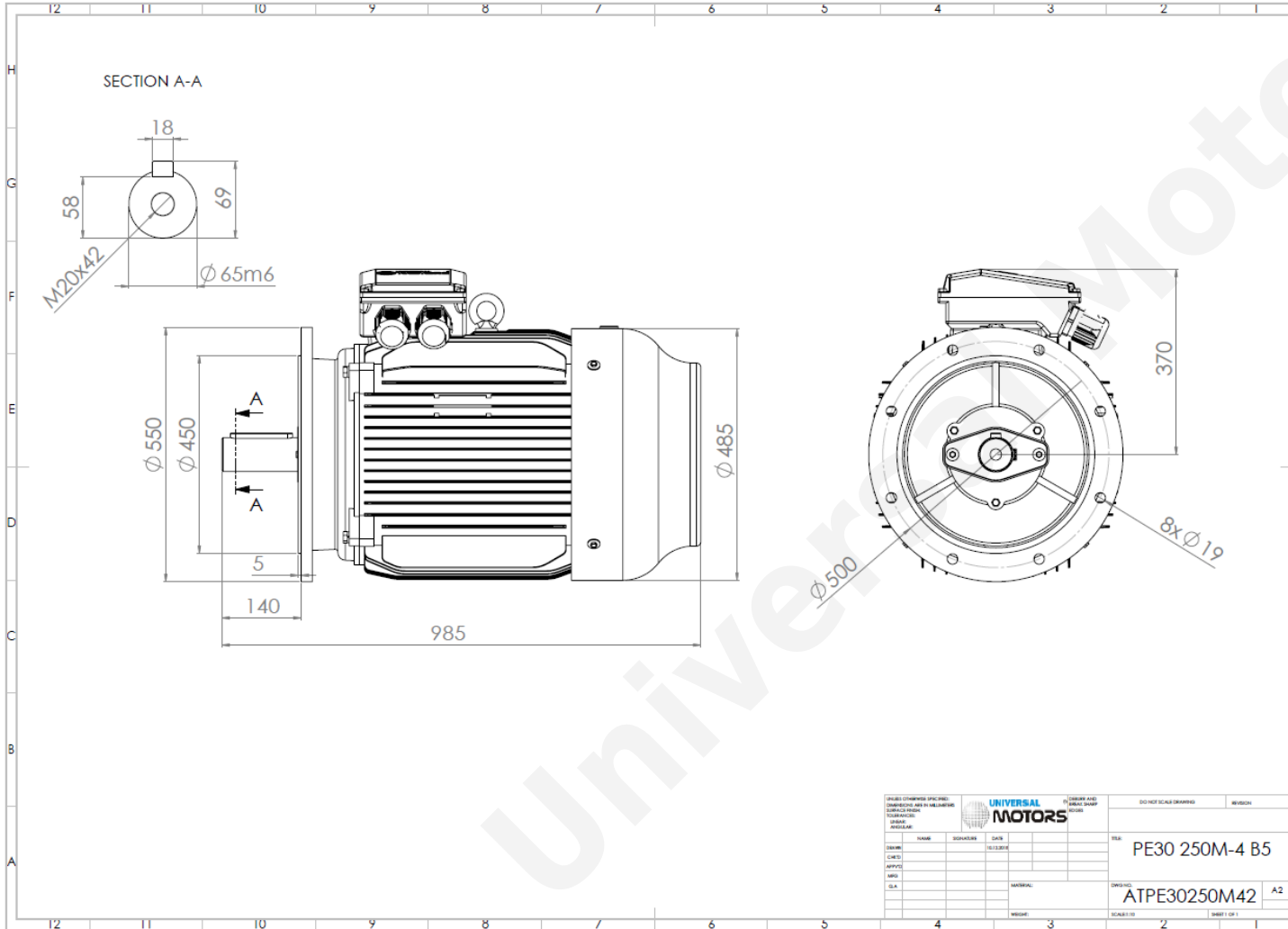




# TECHNICAL DATA

Three Phase Electric Motors - Cast Iron Frame  
 PE30 250M-8  
 30 kW / 40 Cv  
 735 RPM



Motor type:	<b>PE30 250M-8</b>
Output:	<b>30 kW / 40 Cv</b>
Speed (min <sup>-1</sup> ):	<b>735 RPM</b>
Frequency:	<b>50 Hz</b>
Voltage:	<b>400 V</b>
Current:	<b>60.0 A</b>
Power factor (Cos Ø):	<b>0.79</b>
Poles:	<b>8</b>
Insulation class:	<b>F</b>
Temperature rise Class:	<b>B</b>
Efficiency 50%:	<b>90.6 %</b>
Efficiency 75%:	<b>91.5 %</b>
Efficiency 100%:	<b>91.3 %</b>
Torque:	<b>389 N.m</b>
Tstarting/Tnominal:	<b>1.9</b>
Istarting/Inominal:	<b>6.5</b>
Tmaximum/Tnominal:	<b>2.0</b>
Noise:	<b>75 Db(A)</b>
Weight:	<b>426 Kg</b>
Bearing DE:	<b>6314 C3</b>
Bearing NDE:	<b>6314 C3</b>

UNIVERSAL MOTORS		UNIVERSAL MOTORS		DO NOT SCALE DRAWING		REVISION	
DESIGNER	DATE	CHECKED	DATE	DRAWING NO.		SHEET 1 OF 1	
NAME	DESIGNER	DATE	REVISION	TITRE		A2	
UNIVERSAL MOTORS	UNIVERSAL MOTORS	UNIVERSAL MOTORS	UNIVERSAL MOTORS	PE30 250M-4 B5			
UNIVERSAL MOTORS	UNIVERSAL MOTORS	UNIVERSAL MOTORS	UNIVERSAL MOTORS	ATPE30250M42			

Regime - S1

Altitude - 1000m

Environment Temperature - 40°C

## CONTACTS:

UNIVERSAL MOTORS      Tel: +351 252 299 080  
 Rua de São Brás,745      Fax: +351 252 299 089  
 4480-782 VILA DO CONDE      Mail: [geral@universalmotors.pt](mailto:geral@universalmotors.pt)

\* References applied only in the UK